

Late Bloomers Garden Club

Member of The Garden Club of America

Presents



ON A CLEAR DAY YOU CAN SEE FOREVER

A GCA Flower Show

The Garden Club of Jacksonville
1005 Riverside Avenue - Jacksonville, Florida

Open to the public

Wednesday, March 29, 2023 1:30 – 4 pm
Thursday, March 30, 2023 10:00 am – 2:00 pm

Free admission to Flower Show

lbgcflowershow.info

latebloomersjax.org



**ON
A
CLEAR
DAY
YOU
CAN

SEE
FOREVER**

A GCA FLOWER SHOW
Presented by Late Bloomers Garden Club

The purpose of a flower show is threefold:
to set standards of artistic and horticultural excellence;
to broaden knowledge of horticulture, floral design, conservation,
photography and other related areas; and to share the beauty
of a show with fellow club members and with the public.

The Garden Club of America Flower Show and Judging Guide July 2022 Edition



The purpose of The Garden Club of America is to stimulate the knowledge and love of gardening; to share the advantage of association by means of educational meetings, conferences, correspondence and publications; and to restore, improve and protect the quality of the environment through educational programs and action in the fields of conservation and civic improvement.

Late Bloomers Garden Club was founded in 1990. The sixty active members have a rich tradition of supporting the Jacksonville community with grants for civic projects and other activities that align with its mission.

Late Bloomers Garden Club grants have included Jacksonville University, Botany Honors Project; Greenscape of Jacksonville Blue Tree Project; Hemming Park; Dreams Come True; NE Florida Land Trust; Jacksonville Arboretum and Gardens; Cummer Museum of Art and Gardens and the Student Conservation Association. Beginning in 2008, Late Bloomers Garden Club has presented an annual fundraiser with Greenscape of Jacksonville, Inc. helping to raise awareness of the importance of planting, protecting and promoting trees in Jacksonville. In 2012, Late Bloomers Garden Club received The Garden Club of America Founders Fund Award, for their work with the Gateway Community Service Serenity Park Project.

Late Bloomers Garden Club is a member of
The Garden Club of America and The Garden Club of Jacksonville

Late Bloomers Garden Club

Member of The Garden Club of America

Presents



ON A CLEAR DAY YOU CAN SEE FOREVER

A GCA Flower Show

The Garden Club of Jacksonville
1005 Riverside Avenue - Jacksonville, Florida

Open to the public

Wednesday, March 29, 2023 1:30 – 4 pm
Thursday, March 30, 2023 10:00 am – 2:00 pm

Free admission to Flower Show

TABLE OF CONTENTS

TIMETABLE FOR EXHIBITORS	5
FLOWER SHOW COMMITTEE	6-7
GCA RULES	8
GENERAL INFORMATION	9-10
DIVISION I - Floral Design Guidelines	11-12
Floral Design Classes	13
DIVISION II - Horticulture Guidelines	14-15
Horticulture Classes	16-18
DIVISION III - Photography Guidelines.	19-21
Photography Classes	22
DIVISION IV - Education Exhibit	23
GCA FLOWER SHOW AWARDS	24-26
REGISTRATION	27-29
PHOTOGRAPHY ENTRY FORM	30
MAP AND DIRECTIONS	31

TIMETABLE FOR EXHIBITORS

September 1, 2022	Registration opens for all Late Bloomers GC members
September 29, 2022	Horticulture - Six month ownership deadline
October 1, 2022	Registration opens for all divisions
December 29, 2022	Horticulture - Three month ownership deadline
January 28, 2023	Photography Registration deadline
March 1, 2023	Floral Design Registration Photography submission deadline
March 18, 2023	Horticulture deadline for classes requiring registration

TUESDAY, MARCH 28TH

2:30-4:00 p.m. Floral Design & Horticulture entries accepted & passed

WEDNESDAY, MARCH 29TH

7:00 - 9:30 a.m. Floral Design & Horticulture entries accepted & passed

10:00 a.m. Judges briefing

10:30 a.m. Judging begins

1:00 p.m. Flower Show Evaluation

1:30 - 4 p.m. Show open to the public

6:00 - 8:00 p.m. Celebration Party

THURSDAY, MARCH 30TH

9:00 - 10:00 a.m. Refreshing and maintenance of exhibits

10:00 - 2:00 p.m. Show open to the public

2:15 -3:00 p.m. All entries must be removed

FLOWER SHOW COMMITTEE

Co-Chairmen

Leslie Pierpont 904-708-0010 lespierpont@mac.com
Francy Robertson 904-614-4128 fbrobertson1@gmail.com

Club President

Marianne Salas 631-921-5109 moliviasalas@gmail.com

Awards

Dottie Nutant 904-381-1027 dorothenutant@bellsouth.net
Robin Patton 904-343-6378 rbnsnest@yahoo.com

Judges, Clerks, Passers

Mary Pietan 904-234-4915 mfpietan@gmail.com
Claudia Naughton 904-705-1508 naughtoncc@gmail.com

Hospitality

Judges' Breakfast

Patricia Bent 904-384-1596 ppbent@aol.com
Trisha MacRae 904-635-4536 pbmacrae@aol.com

Judges' Luncheon

Sally Lee 904-866-2233 sallyjax1@gmail.com
Missy Cassidy 904-631-4969 mcassidy1155@gmail.com

Judges' Dinner

Marnie Sprague 904-403-6428 marnie.sprague@yahoo.com
Judi Hardwick 904-608-4733 jbh4115@aol.com

Celebration Party Gina Donahoo, Laura Magevney, Karla Newton

Passing Leslie Pierpont 904-708-0010 lespierpont@mac.com
Carol Platt 904-303-6236 cfp123@aol.com

Publicity Robin Patton 904-343-6378 rbnsnest@yahoo.com

FLOWER SHOW COMMITTEE

Division Chairmen

Division I, Floral Design

Muffet Rhyne 904-655-0714 jsrhyne@comcast.net
Shirley Francis 904-923-5808 shirleywfrancis@gmail.com

Division II, Horticulture

Carol Platt 904-303-6236 cfp123@aol.com
Missy Cassidy 904-631-4969 mcassidy1155@gmail.com

Division III, Photography

Mary Pietan 904-234-4915 mfpietan@gmail.com
Cyndi Schmidt 904-396-0808 cyndischmidt@gmail.com

Division IV, Education Exhibit

Marianne Salas 311-921-5109 moliviasalas@gmail.com

Show Photographers

Mary Pietan 904-234-4915 mfpietan@gmail.com
Debbie Thompson 904-705-1768 debbietthompson@gmail.com

Signage & Graphics

Sally Barnett 904-403-3124 sally.barnett@comcast.net

Staging

Ann Carey 904-655-2444 annprestoncarey@gmail.com
Susan Williams 904-923-4977 jbw3@bellsouth.net

Registration

Laura Haley 914-629 5825 Ljahaley@gmail.com

Treasurer

Trisha MacRae 904-635-4536 pbmacrae@aol.com

Volunteer Vaughn Lee Griffin

GCA RULES

1. Please carefully read and follow GCA Flower Show Rules, General Information and Division Guidelines. All rules as stated in *The Garden Club of America Flower Show and Judging Guide*, July 2022 Edition, shall apply (*with the exception of the required Educational component*).
2. All plant material must be correctly identified with the botanical and common names, if possible. Accepted references for nomenclature are: AHS A-Z Encyclopedia of Garden Plants; International Plant Names Index at www.ipni.org or <http://www.internationalplantnames.com>; Plant Systematics at <http://www.plantsystematics.org/>; Royal Horticultural Society plant finder database <http://apps.rhs.org.uk/rhsplantfinder>
3. The Garden Club of America expects all exhibitors to be aware of the need to promote conservation of endangered and threatened plants. Plants collected in the wild and listed by the Florida Natural Heritage Program may not be exhibited in any flower show sponsored by a GCA club. Cultivated plant material listed by Florida's Natural Heritage Program may be exhibited if accompanied by a typed card stating that it has not been collected from the wild or that it was collected out-of-state and giving information concerning its cultural requirements and methods of propagation. Natural Heritage Program lists of endangered plant material will be available before and during the show from the division chairmen and are available online at <http://plants.usda.gov/threat.html>
4. Plant material showing evidence of insects or disease must be removed immediately from the exhibition area. This rule will be enforced at any time during the show, whenever the problem is identified.
5. All entries in the Floral Design and Horticulture Divisions must include fresh and/or dried plant material. Fresh plant material must be in water or conditioned in such a way as to remain in pristine form while on exhibition. An entry not maintained in show condition may have its award removed. Entries in Photography are required to include plant material.
6. Locally invasive plants, diseased plant material, artificial plant material, live animals (including fish), taxidermy, natural birds' nests, feathers of any kind and protected sea life, including coral, are not permitted, <http://plants.usda.gov/java/noxiousDriver>

GENERAL INFORMATION

1. Entries are open to all GCA club members, including provisionals, and professionals in their disciplines. Division I Floral Design, Class 3 Near-Sighted, and Division II Horticulture Classes 1-31 are also open to The Garden Club of Jacksonville Circle members.
2. Registration is required for all classes, with the exception of those in the Horticulture Division, Classes 1-31 and Class 37. Registration is suggested for Classes 32-36. Registration forms are on pages 27-29 of the schedule. Classes will be filled in the order registration forms are received according to the postmark or email date and time.
3. Entering in a show constitutes permission to use images of the submitted content in all GCA channels of communication.
4. While The Garden Club of America, Late Bloomers Garden Club and The Garden Club of Jacksonville will exercise due caution in safeguarding exhibits, responsibility for damage, loss or personal injury cannot be assumed.
5. Any clarification or change in the rules, as originally stated in the schedule, shall be communicated promptly in writing by the division chairman to all exhibitors in the class. At the show, the judges and the passing committee will be notified of any changes.
6. An entry card must accompany each entry. Entry cards will be available at the show and upon request, from the registration chairman in advance of the show. Information required on the entry card must be completed in black waterproof medium.
7. The passing committee must pass each entry before an exhibitor may leave the show area. The passing committee reserves the right to refuse any entry that does not conform to the rules of the schedule. The exhibitor has the option of correcting the entry, if time permits. If not corrected, the entry cannot be judged, but may remain in place, marked "For Exhibit Only" with a brief, constructively worded statement explaining why it was not judged. The judges may not disqualify any entry passed by the passing committee unless evidence of insect infestation or disease is identified.

GENERAL INFORMATION (con't)

8. Once an entry is passed, the exhibitor(s) must immediately leave the show floor. The only exception will be flower show committee members who have entered and been passed according to the timetable. A passed entry may not be touched again by the exhibitor until after judging and then only to carry out necessary maintenance.
9. Only participating judges and clerks will be allowed on the show floor during judging. Flower Show Chairman and division chairmen should remain nearby but off the show floor until needed.
10. All containers and accessories must be inconspicuously labeled with the exhibitor's name.
11. A novice is an individual exhibitor who has not won a first place ribbon or a GCA Special Award in the division entered at a GCA Flower Show, GCA Major Flower Show or Sanctioned Non-GCA Major Flower Show. An exhibitor winning a first place ribbon in a GCA Flower Show is still considered a novice in a GCA Major Flower Show or in a Sanctioned Non-GCA Major Flower Show or in another division of any flower show. In addition, an exhibitor who has won a first place ribbon or Special Award in a GCA Major Flower Show or Sanctioned Non-GCA Major Flower Show is no longer a novice in any level of GCA Flower Shows in the division won. Only individual novice exhibitors are eligible to receive the GCA Novice Awards or the Sandra Baylor Novice Floral Design Award. A novice exhibitor will be identified on the entry card, following the initial judging.
12. A statement of intent for all divisions is optional, but if included by exhibitor the statement of intent must be submitted at the time of passing. The statement must be no more than 25 words, typed or printed in waterproof medium on a 4" x 6" white, unlined card.
13. All exhibits must remain in place and in show condition until fifteen minutes following the closing time of the show.

DIVISION I

Floral Design Guidelines

1. Please carefully read and follow the GCA Rules, General Information and Timetable for Exhibitors.
2. An exhibitor is permitted only one entry per class, but may enter more than one class. The exhibitor(s) under whose name(s) the entry has been registered must create and complete the design. No more than two exhibitors may execute a design unless otherwise stated in the schedule. All participants must be listed. Only listed exhibitors and show personnel may be on the show floor at the time of entry.
3. If forced to withdraw, an exhibitor must notify the registration chairman and find a substitute unless there is a waiting list for the class.
4. Mechanics should not be visible unless they are an integral part of the design.
5. Designs may be executed off-site and brought to the show completed.
6. Anything not prohibited in the GCA Rules, General Information, Floral Design Division Guidelines or individual class descriptions is permitted.
7. Although permitted, the use of cut fruits and vegetables is discouraged and should be undertaken only with proper treatment to prevent spoilage and insect contamination.
8. Judging will be based on the principles of design: balance, contrast, dominance, proportion, rhythm and scale; and the elements of design: light, space, line, form, color, texture, pattern and size. Creativity is important, as are distinction, conformance to, and interpretation of, the class and schedule.
9. Accessories are permitted, unless otherwise stated in the class description.

DIVISION I

Floral Design Guidelines

10. Pedestals may not be moved. Tops of pedestals may not be enlarged or draped. Floral Designs have no height restrictions unless specified in the class description.
11. Pertinent paint samples will be available from the division chairmen after the registration form is accepted.
12. Questions regarding class requirements may be directed to the class consultant.
13. The list of the scale of points by which the classes are to be judged as follows:

Classes 1, 2 and 4

Design	35
Interpretation	20
Creativity	20
Distinction	15
Conformance	10
Total	100

Class 3

Design	30
Scale and Proportion	25
Creativity	15
Conformance	10
Interpretation	10
Distinction	10
Total	100

DIVISION I

Floral Design Classes

RANGE OF VIEW

Class 1

Line of Sight

4 Entries

A design staged on an off-white pedestal 40" high x 14" square not to exceed 12" from center of pedestal in width or depth. Viewed from all sides.

Class 2

Tunnel Vision

4 Entries

A design staged in an off-white niche 12" high x 10" wide x 9" deep displayed 50" from the floor. Background may be amended. Plant material may not extend outside of niche. Viewed from the front.

Class 3

Near-Sighted

4 Entries

A miniature design staged on an off-white L-shaped niche with a square back and base 8" high x 8" wide, sides and top are open, placed on an off-white shelf 52" high. Viewed from the front.

A miniature design may not exceed more than 5" in height, width and depth including all of its components.

Class 4

Double Vision

4 Entries

A two-sided design in red and green staged on an off-white pedestal 40" high x 14" square top not to exceed 12" from center of pedestal in width or depth. Viewed from all sides

A two-sided design is organized in one or more containers that are joined to appear as one. Opposing sides present a composition thematically linked but tell a contrasting story.

Class Consultant: Laura Haley, 914-629-5825, Ljahaley@gmail.com

DIVISION II

Horticulture Guidelines

1. Please carefully read and follow the GCA Rules, General Information and Timetable for Exhibitors.
2. Entries must have been owned and grown by the exhibitor for a minimum of three months, unless otherwise stated in the schedule (Class 36 Orchids must be owned for 6 months).
3. Entries eligible for the **Catherine Beattie Medal** and/or the **Clarissa Willemsen Horticulture Propagation Award** must have been in the possession of the exhibitor for at least six months and will be identified on the entry card. A propagation card with dates and methods must accompany entries eligible for the **Clarissa Willemsen Horticulture Propagation Award**.
4. An exhibitor may submit more than one entry per class, provided each is a different species or cultivar.
5. All entries propagated by the exhibitor must be so identified with details of the method and relevant date(s) of propagation on the entry card.
6. Mats, stands, saucers, stakes, ties, etc. are allowed.
7. Classes may be subdivided and entries moved and/or reclassified at the discretion of the show committee and/or the judges. Plants trained as bonsais are not permitted.
8. Containers are measured at the diameter or the diagonal of the widest point on the inside of the rim at the soil line.
9. One key card (diagram or plant list) is required when multiple species or cultivars are exhibited in the same container and/or propagation information is applicable. Key card must be a 4" x 6", white, unlined card and completed in black waterproof medium. A 4" x 6" photograph with identifying numbers may be used.

DIVISION II

Horticulture Guidelines

10. Container-grown plants must be exhibited in containers that are clean, unobtrusive and compatible with the exhibit. Terracotta clay pots are preferred. Other options include stone-like (Hypertufa), wire baskets, slatted orchid baskets and plants mounted on driftwood. Disguised double potting and top dressing are permitted; top dressing must not float when watered.
11. The committee will provide containers and wedging materials for all cut specimens.
12. The committee will water the exhibits if instructed to do so in writing. Notify the division chairman at time of entry with written instructions for watering.
13. Refer to the *FS&JG 2022* edition for the appropriate scale of points to be used in judging.

DIVISION II

Horticulture Classes

A WELCOME SIGHT

CUT SPECIMENS

Section A. In Plain Sight (Classes 1 - 31)

One stem, spike or spray not to exceed 24" in length, measured from the lip of the container to the tip of the stem. Any foliage must be attached to the stem.

Classes 1 – 4

Color Vision

Annuals

1. *Antirrhinum*
2. *Delphinium*
3. *Pelargonium*
4. Other

Classes 5-9

Clarity

Perennials

5. *Baptisia*
6. *Hellebores*
7. *Phlox*
8. *Salvia*
9. Other

Classes 10 - 15

Sight Unseen

Bulbs, Corms, Rhizomes and Tubers

10. *Amaryllis*
11. *Canna*
12. *Dietes vegeta*
13. *Narcissus*
14. *Zantedeschia*
15. Other

DIVISION II

Horticulture Classes

Classes 16 -20
Roses

Do My Eyes Deceive Me

- 16. Floribunda**
- 17. Grandiflora**
- 18. Hybrid Tea**
- 19. Shrub**
- 20. Other**

Classes 21-24
Shrubs in Bloom or Berry

Power of Observation

- 21. *Camellia***
- 22. *Rhododendron***
- 23. *Viburnum***
- 24. Other**

Classes 25-28
Plants Grown for Foliage One branch, stem or leaf.

Color Blind

- 25. Annual**
- 26. Perennial**
- 27. Shrub**
- 28. Other**

Class 29-30
Trees in Bloom

Foresight

- 29. Native**
- 30. Other**

Class 31
Bright Idea

A single cut stem grown primarily for food, does not need to be in bloom. This class is not eligible for a GCA Award.

- 31. Edibles**

DIVISION III

Horticulture Classes

CONTAINER-GROWN PLANTS

Section B. Sight For Sore Eyes (Classes 32-35)

Container may include more than one plant of the same species or cultivar.

Classes 32-33 Colored Lens

Plant(s) Grown Primarily for flowers. Must be in bloom.

Class 32. Containers 6" or less

Class 33. Containers greater than 6"

Classes 34-35 See the Bigger Picture

Plant (s) Grown Primarily for foliage.

Class 34. Containers 6" or less

Class 35. Containers greater than 6"

Class 36. Line of Sight

Orchids Must be in bloom. Minimum 6 month ownership required.

Class 37. Spectacle

PAR

An exhibit of exceptional horticultural merit, which does not qualify for entry elsewhere in the Horticulture Division. Entries in the Par classes must have been owned and grown by the exhibitor for a minimum of one year. Cut specimens, orchids or hanging baskets are not permitted. Containers may not exceed 12" diameter/diagonal.

Class Consultant Classes 1-37:

Kandi Osborn, 612-720-2070, kandiosborn@gmail.com

DIVISION III

Photography Guidelines

1. Please carefully read and follow the GCA Rules, General Information and the Timetable for Exhibitors.
2. An exhibitor may make only one entry in a class but may enter two classes. Advance registration is required by 1/28/23. Exhibitors will be notified if accepted or not, at the time of registration.
3. If forced to withdraw, an exhibitor must notify the registration chairman and find a substitute unless there is a waiting list for the class.
4. A printed photograph previously entered in any GCA, GCA Major and Sanctioned Non-GCA Major Flower Show may not be entered again even with slight alterations and reprinting. The same photograph may only be entered in one show at a time.
5. Each photograph must be the work of the exhibitor, under whose name it is registered. In manipulated photographs, any added imagery must be the work of the exhibitor. Non-representational commercial overlays and texture are allowed. Matting, mounting and printing may be done professionally. All photographs must be 2-dimensional and printed on paper unless otherwise specified.
6. Any editing at any stage must be the work of the exhibitor. This includes enhancement for color or clarity, removal of a part of the image, combining images, or distorting the original subject.
7. Photography entries are limited to subjects consistent with The Garden Club of America interests such as horticulture, floral design, gardens/landscapes, conservation and the environment, historic preservation, civic improvement and the natural world. Plant material is required in photographs.
8. Photographs must be mounted on black foam core and may not be overmatted. Overall dimension of entry must be a minimum of 40" and not exceed 52" in total perimeter measurement. The surface finish is the choice of the exhibitor. Glass and framing are not permitted.

DIVISION III

Photography Guidelines

9. Each entry must have the entry form affixed to the back of the photograph mounting with the exhibitor's name, garden club, zone, email, address, phone number and class entered. The top of the photograph must be indicated.
10. The division chairman will provide an entry card to be staged with each photograph. Identification of plant material on the entry card is not required, but encouraged whenever possible.
11. An optional title or brief statement may be included on the entry form.
12. Photographs will be hung against a black background.
13. Photographs must be received no later than 3/1/23. Send photographs to
Mary Pietan
3613 Marathon Key
Jacksonville Beach, FL 32250

Your registration will be confirmed and receipt of your photograph will be acknowledged. For information, contact Mary Pietan at mfpietan@gmail.com or 904 234 4915.

14. All photographs will be passed by the photography committee to verify that class specifications have been met. If a photograph is not passed, the exhibitor will be notified and allowed, if time permits, to send a replacement photograph.
15. The photography committee may reclassify an entry, but only with the permission of the exhibitor. The photography committee and/or the judges may subdivide a class.
16. Images of individuals are not permitted.
17. If a photograph is to be returned, the exhibitor must provide a self-addressed return label, envelope or mailing box, with two 15" x 19" bubble wrap sleeves and 2 suitable pieces of foam core. Please include a \$12 check payable to Late Bloomers Garden Club for postage or stamps of an equal value. Any award received will be noted on the back of the

DIVISION III

Photography Guidelines

mount before it is returned. If a photograph will not be returned, include a self-addressed, stamped envelope to receive the comment card and any award received.

18. The scale of points by which the classes are to be judged:

Classes 1-3:

Creativity	25
Composition	25
Technical Skill	20
Conformance/Interpretation	20
Distinction	<u>10</u>
Total	100

Class 4:

Creativity	30
Composition	20
Technical Skill	25
Conformance/Interpretation	10
Distinction	<u>15</u>
Total	100

DIVISION III

Photography Classes

SPECTRUM

Class 1 Perfect Vision 4 Entries

Landscape. Color. Plant material required.

Landscape: A view of the scenery, of any kind from wilderness vistas to urban cityscapes, land or sea. Primary subject is the scenery and it must dominate although the image may contain secondary elements such as, animals or objects.

Class 2 Color Blind 4 Entries

Monochrome. Plant material required.

Monochrome: A photograph executed in black and white or in shades (adding black) and tints (adding white) of only a single color (hue) such as sepia, across the whole image. Monochrome images can be shot in black and white film. Digital images can be done in the camera or converted to gray scale using computer software.

Class 3 Mirror Image 4 Entries

Reflection. Color. Plant material required.

Class 4 Double Vision 4 Entries

Creative technique. Color. Plant material required.

Creative technique: The use of manipulation or alteration in any stage of the photographic process to achieve an effect significantly different from the original photograph. All representational images in a manipulated or creative technique photo must be the work of the photographer. Non-representational enhancements such as the addition of purchased textures are allowed.

Class Consultant: Mary Pietan, 904-234-4915, mpietan@gmail.com

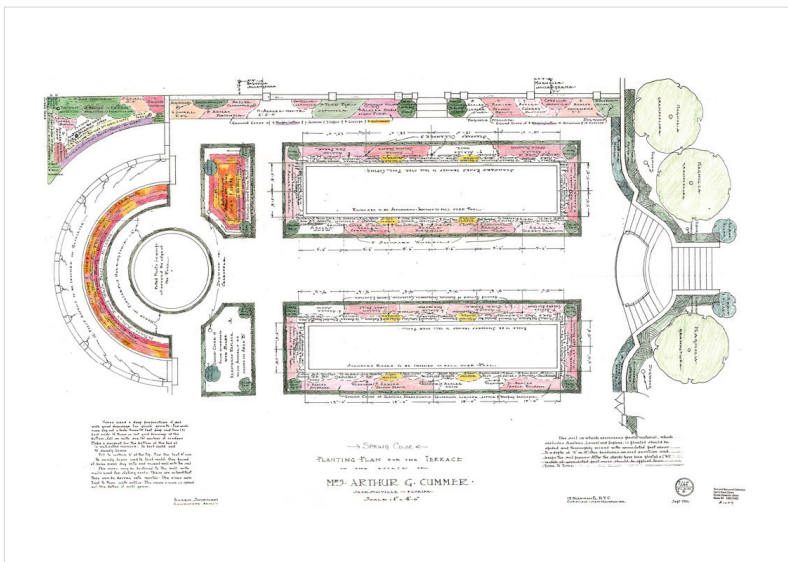
DIVISION IV

Garden History and Design

EDUCATION EXHIBIT

Sight Lines are used in landscape design to accentuate an object, control movement or draw attention to a focal point. Lines can be horizontal, vertical, diagonal or curved.

Illustrated examples will be drawn from gardens in Jacksonville, including the Cummer Gardens.



GCA FLOWER SHOW AWARDS

GCA Flower Show Awards described below have been applied for and will be presented if merited.

Division I, Floral Design

The **Dorothy Viotor Munger Award** may be awarded to members of The Garden Club of America clubs in competitive Floral Design classes at a GCA Flower Show. It is offered in recognition of creative work of outstanding beauty using predominantly fresh plant material. The design must have placed first, second, or third. Challenge class entries are not eligible. The award is not a substitute for Best in Show and will be given at the discretion of the judges.

The **Harriet DeWaele Puckett Creativity Award** may be awarded to members of GCA clubs or non-members in recognition of a uniquely skillful and creative response to an imaginative schedule in Floral Design. It will be given for an innovative and interpretive entry, which, although it abides by the principles of good design, goes beyond traditional period arrangement to whatever art form the exhibitor(s) chooses. The design must have placed first, second, or third in the Floral Design Division of a GCA Flower Show. An entry in any challenge class is not eligible to receive this award. The award is not a substitute for Best in Show and will be given at the discretion of the judges.

The **Sandra Baylor Novice Floral Design Award** may be given at a GCA Flower Show to an exhibitor who is a member of a GCA club and who has never won first place, or a GCA Special Award in the Floral Design Division of a GCA Flower Show, GCA Major Flower Show or Sanctioned Non-GCA Major Flower Show. It shall be awarded to an individual novice exhibitor for a unique and skillful response to the schedule. Novice entries placing first, second, or third in any competitive class, including challenge classes, are eligible for this award.

Division II, Horticulture

The **Catherine Beattie Medal** may be awarded for a horticulture entry distinguished by its vibrancy, prime condition, and perfection of grooming. The exhibitor must have owned and grown the exhibit for at least six months. The medal may be awarded for a single plant, collection of plants, container garden, or cut specimen, but only if there is an exhibit worthy of the honor. It may be awarded to members of GCA clubs only; individual, joint, and club entries are eligible. The award should not be considered as a substitute for Best in Show. The medal may not be awarded to the same exhibit more than once; however, offspring of a Beattie winner are eligible to receive the award.

GCA FLOWER SHOW AWARDS

The **Clarissa Willemsen Horticulture Propagation Award** may be awarded for a horticulture entry distinguished by its prime condition, flawless grooming and difficulty of propagation. The entry must have been propagated and grown by the exhibitor for at least six months. This award may be given for a single rooted plant or a collection of rooted plants. The dates and method of propagation must be recorded on an accompanying propagation card. The entry must have placed first, second, or third at a GCA Flower Show. The award may not be given to the same exhibit more than once.

The **Rosie Jones Horticulture Award** may be presented to a horticulture entry of exceptional visual appeal that reflects the spirit of growing with joy and enthusiasm and inspires others to propagate, grow, show and share horticulture. An exhibit that has been propagated by the exhibitor will be given special consideration but propagation is not a requirement. Perfection, while always desirable, is not a primary criterion. This award celebrates the ineffable joy inherent in the beauty and pursuit of horticulture.

Division III, Photography

The **Photography Creativity Award** may be awarded at a GCA Flower Show to a member of a GCA club in recognition of creative and technical excellence in response to the theme of the schedule. The entry must have placed first, second, or third.

Division II, III, The GCA Novice Award may be given at a GCA Flower Show in the **Horticulture** and **Photography** to an exhibitor who is a member of a GCA club and who has never won first place or a GCA Special Award in the division entered, of a GCA Flower Show, GCA Major Flower Show or Sanctioned Non-GCA Major Flower Show. It shall be awarded to an individual novice exhibitor for an outstanding exhibit. Novice entries placing first, second, or third are eligible for this award.

Division V, Conservation and Education Exhibits

The **Ann Lyon Crammond Award** may be presented at a GCA Flower Show to an outstanding educational exhibit, which best educates the public about gardens. Any educational exhibit, which increases the appreciation of any aspect of plants, gardens, or landscape design, may be considered for this award. The award may be given to GCA club members, member clubs, non-members or other organizations.

GCA FLOWER SHOW AWARDS

The **Marion Thompson Fuller Brown Conservation Award** may be presented for an outstanding conservation exhibit at a GCA Flower Show. The award recognizes an exhibit of exceptional educational and visual merit, which increases knowledge and awareness of the environment. The exhibit should emphasize environmental concerns and may demonstrate conservation practices. Plant material may or may not be used and, when appropriate, must be clearly identified. Protected material may be included if such materials are identified as protected and not collected in the wild. The award may be given to The Garden Club of America clubs, club members, non-members or other organizations.

Overall

Best in Show, selected from among the first place winners, may be awarded in each division.

Judges' Commendation(s) may be given to an entry, class, section, special exhibit or other aspect of the show that is of exceptional merit.

Award of Appreciation may be given to thank an exhibitor or group for participation. The award may also be given to non-judged classes.

REGISTRATION

DIVISION I, Floral Design Registration Form

Please complete one Registration Form per entry.

Registration Deadline: 3/1/23

Send to: Laura Haley
113 Knotty Pine Trail
Ponte Vedra Beach, FL 32082

914 629 5825
Ljahaley@gmail.com

Please print using block letters.

Date: _____

Name: _____

Garden Club/Zone: _____

Address: _____

Tel: _____ Email: _____

Co-Exhibitor(s) _____

Class Number

Class Title

1st Choice: _____

2nd Choice: _____

Novice? Yes ☐ No ☐ (individual exhibitor only) ☐

A novice is an individual exhibitor who has not won a first place ribbon or a GCA Special Award in Floral Design in a GCA Flower Show, GCA Major Flower Show or Sanctioned Non-GCA Major Flower Show. If your novice status changes before the date of this show, please notify the division chairman or class consultant.

REGISTRATION

DIVISION II, Horticulture Registration Form

Registration is not required for cut specimen classes. Registration is requested for Classes 32 - 36.

Please complete one Registration Form per entry.

Registration Deadline: 3/18/23

Send to: Laura Haley
113 Knotty Pine Trail
Ponte Vedra Beach, FL 32082

914 629 5825
Ljahaley@gmail.com

Please print using block letters.

Date: _____

Name: _____

Garden Club/Zone: _____

Address: _____

Tel: _____ Email: _____

Class Number

Class Title

1st Choice: _____

2nd Choice: _____

Novice? Yes ☐ No ☐

A novice is an individual exhibitor who has not won a first place ribbon or a GCA Special Award in Horticulture in a GCA Flower Show, GCA Major Flower Show or Sanctioned Non GCA Major Flower Show. If your novice status changes before the date of this show, please notify the division chairman or class consultant.

REGISTRATION

DIVISION III, Photography Registration Form

Please complete one Registration Form per entry.

Registration Deadline: 1/28/23

Send to: Laura Haley
113 Knotty Pine Trail
Ponte Vedra Beach, FL 32082

914 629 5825
Ljahaley@gmail.com

Please print using block letters.

Date: _____

Name: _____

Garden Club/Zone: _____

Address: _____

Tel: _____ Email: _____

Class Number

Class Title

1st Choice: _____

2nd Choice: _____

Novice? Yes ☐ No ☐

A novice is an individual exhibitor who has not won a first place ribbon or a GCA Special Award in Photography in GCA Flower Show, GCA Major Flower Show or Sanctioned Non-GCA Major Flower Show. If your novice status changes before the date of this show, please notify the division chairman or class consultant.

The following must be copied and affixed to the back of the photograph mounting when entry is mailed or submitted

▲ TOP ▲

Photograph Entry Form

▲ TOP ▲

Photograph Entry Deadline: **March 1, 2023**

Please complete one Entry Form per photograph. Affix the form to the back of the mounting.

Send photograph to: Mary Pietan

3613 Marathon Key

Jacksonville Beach, FL 32250

Class Entered: _____ Email: _____

Name: _____ Garden Club/Zone: _____

Address: _____

Tel: _____

Please include a check for return postage (\$12) and self addressed packaging if photograph is to be returned.

Please make your check payable to Late Bloomers Garden Club.

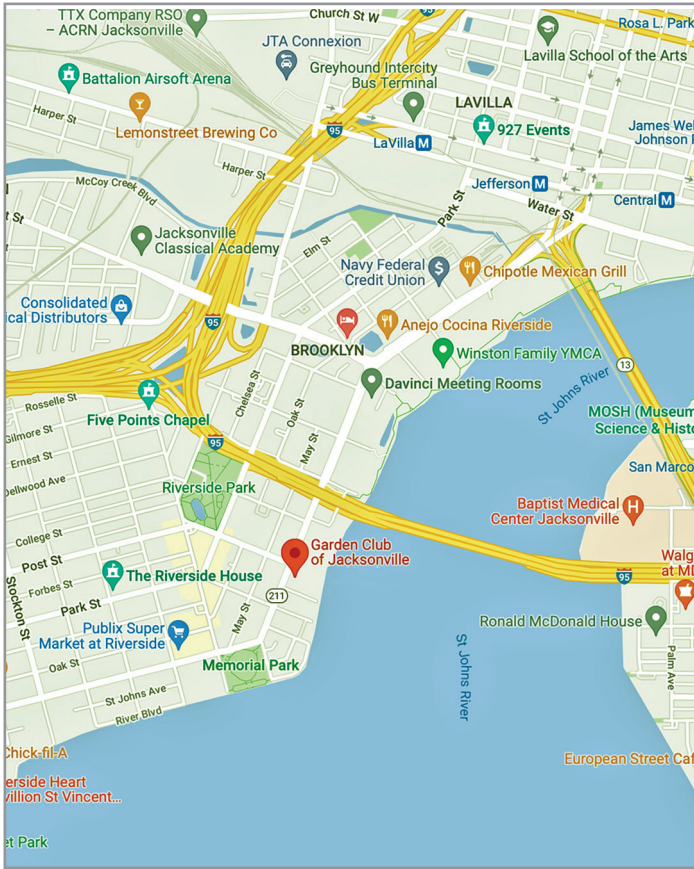
Identifiable Plant Material (optional): _____

Title or brief statement (optional): _____

Novice? Yes ☐ No ☐

A novice is an individual exhibitor who has not won a first place ribbon or a GCA Special Award in Photography in a GCA Flower Show, GCA Major Flower Show or Sanctioned Non-GCA Major Flower Show. If your novice status changes before the date of this show, please notify the division chairman or class consultant.

MAP & DIRECTIONS



GARDEN CLUB OF JACKSONVILLE
1005 Riverside Avenue
Jacksonville, Florida 32204
(904) 355 - 4224

LATE BLOOMERS GARDEN CLUB
Jacksonville, Florida